

emergency.lu



RE-ESTABLISHING COMMUNICATION IN EMERGENCY SITUATIONS

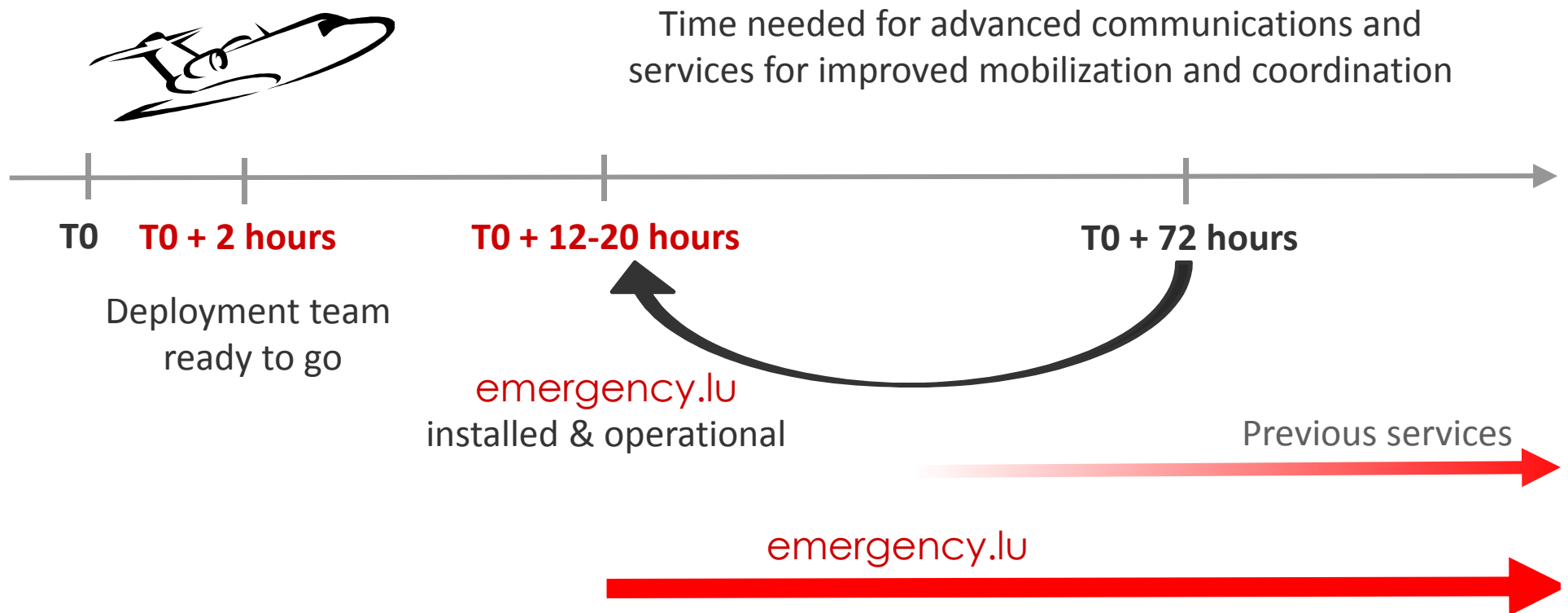
emergency.lu

RATIONALE



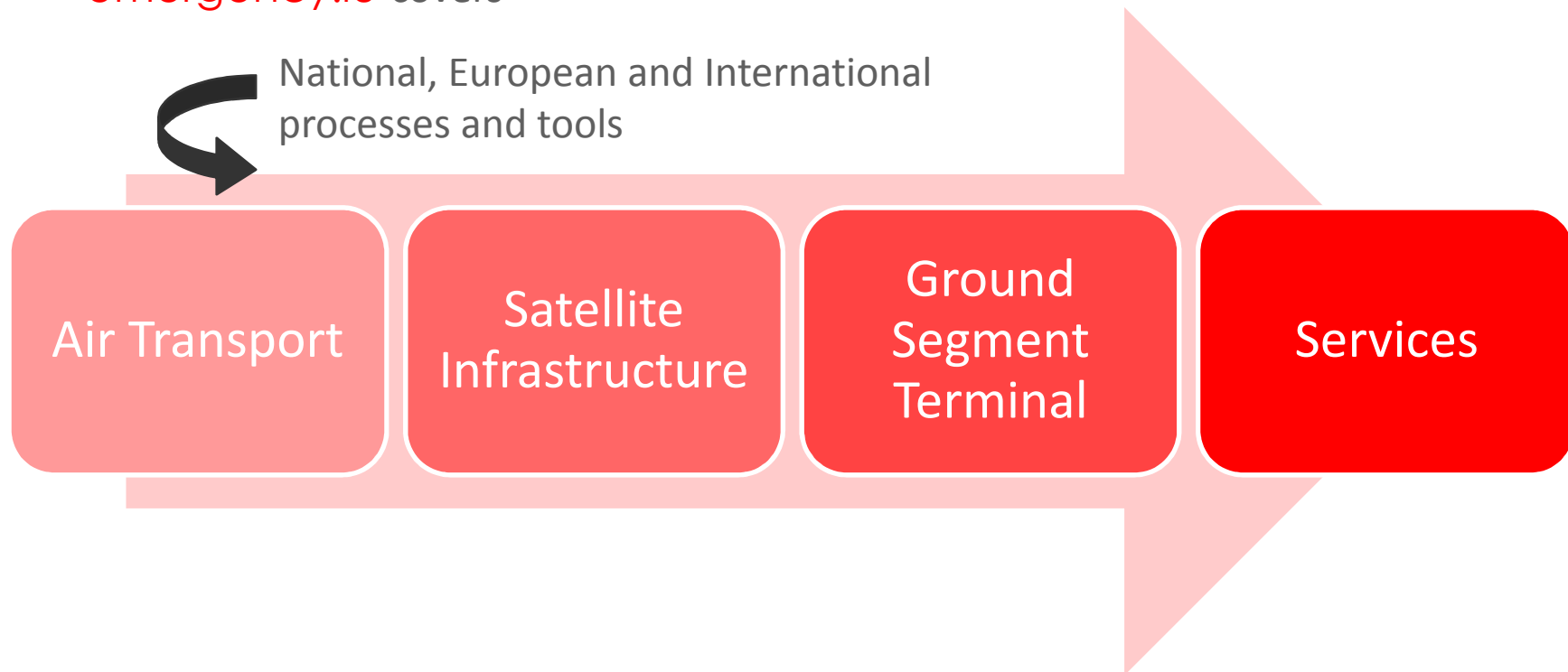
emergency.lu

RATIONALE



APPROACH OF EMERGENCY.LU

- **emergency.lu** covers



- **emergency.lu** is an integral and complementary part of the worldwide humanitarian tool box for setting up telecommunications and information-sharing systems

RATIONALE

- developed as a public-private partnership between Luxembourg government and private industrial partners
- in close cooperation with WFP, as Emergency Telecommunications Cluster (ETC) lead agency
- open to other partners to join and enrich the system through their comparative advantages
- offered by Luxembourg as a free global public good to the global humanitarian community

PRIVATE PARTNERS TO THE PPP

Public-private partnership between the government and three Luxembourg-based companies:



NoSaCo® Rapid & NoSaCo® Regular
Distributed Information Management
User interfaces



Satellite Hubs, Modems & Capacity
Ad-hoc coverage & capacity extension
Voice over IP platform



Secure storage and disaster logistics
Rapid deployment on site
24/7 operations center

emergency.lu

OPERATIONAL AND DEPLOYMENT PARTNERS TO THE PPP



EMERGENCY TELECOMMUNICATIONS
CLUSTER



**World Food
Programme**

ERICSSON RESPONSE



THE GOVERNMENT
OF THE GRAND DUCHY OF LUXEMBOURG
Rescue Services Agency

Humanitarian Intervention Team



emergency.lu

DEPLOYED COMPONENTS



RAPID

Rapid deployment



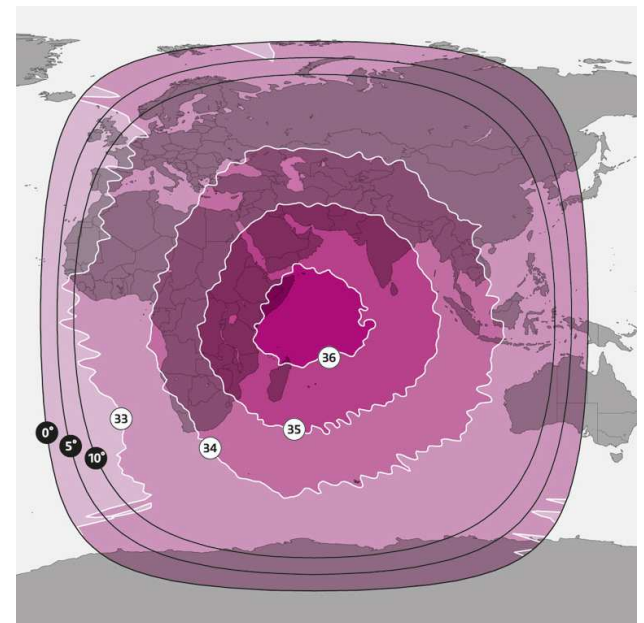
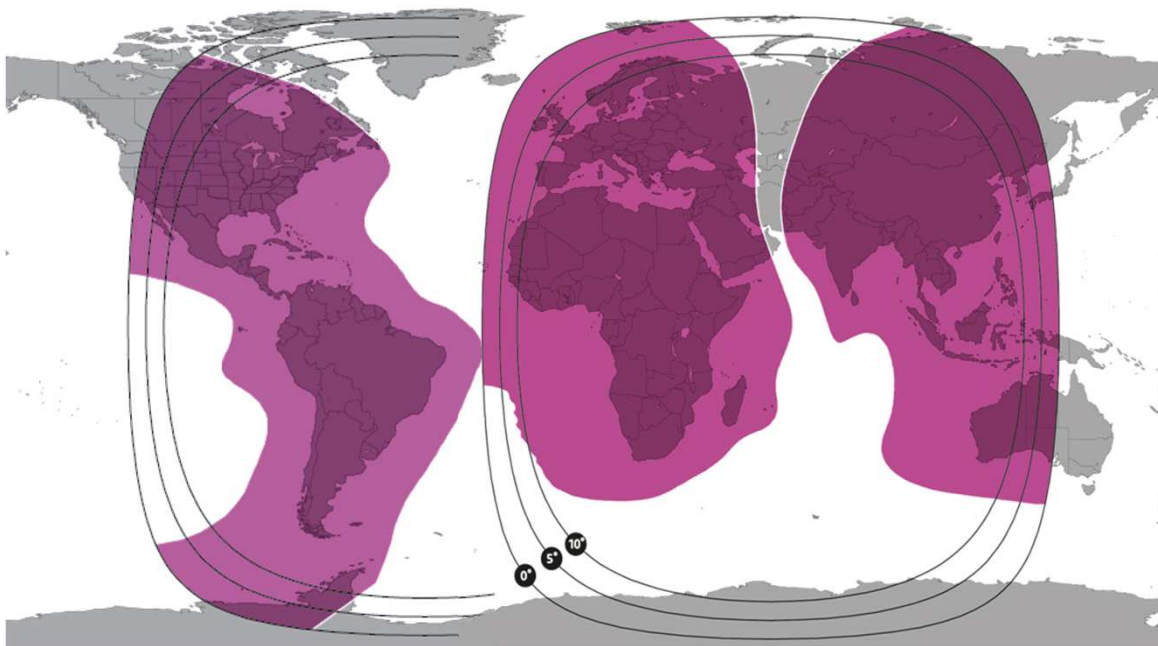
REGULAR

Regular deployment



SATELLITE INFRASTRUCTURE

- Three satellite HUBs with pre-booked capacity (4 beams) and possible ad-hoc capacity 24/7



emergency.lu

LOCAL & REMOTE SERVICES:
globalepic.lu

Situation
analysis



Tracking
& Tracing



Instant
messaging



Maps



Internet
connectivity



Voice



Data sharing

NEPAL 2015 – DESASTER RECOVERY SUPPORT

**Gorkha Earthquake
April 2015**



Source:
-videoweb1 ARD.jpg

emergency.lu

SUPPORTING THE EMERGENCY TELECOMMUNICATIONS CLUSTERS IN NEPAL

- As of 06 May 2015 in addition to the initially deployed equipment, 3 more emergency.lu kits are now in-country.



- SES also provides additional Ku-band capacity to NetHope servicing several different humanitarian organizations in coordination with the GVF.

PHILIPPINES 2014 – DISASTER RECOVERY SUPPORT



emergency.lu

DEPLOYMENT IN PHILIPPINES 2013 TYPHOON HAIYAN RESPONSE



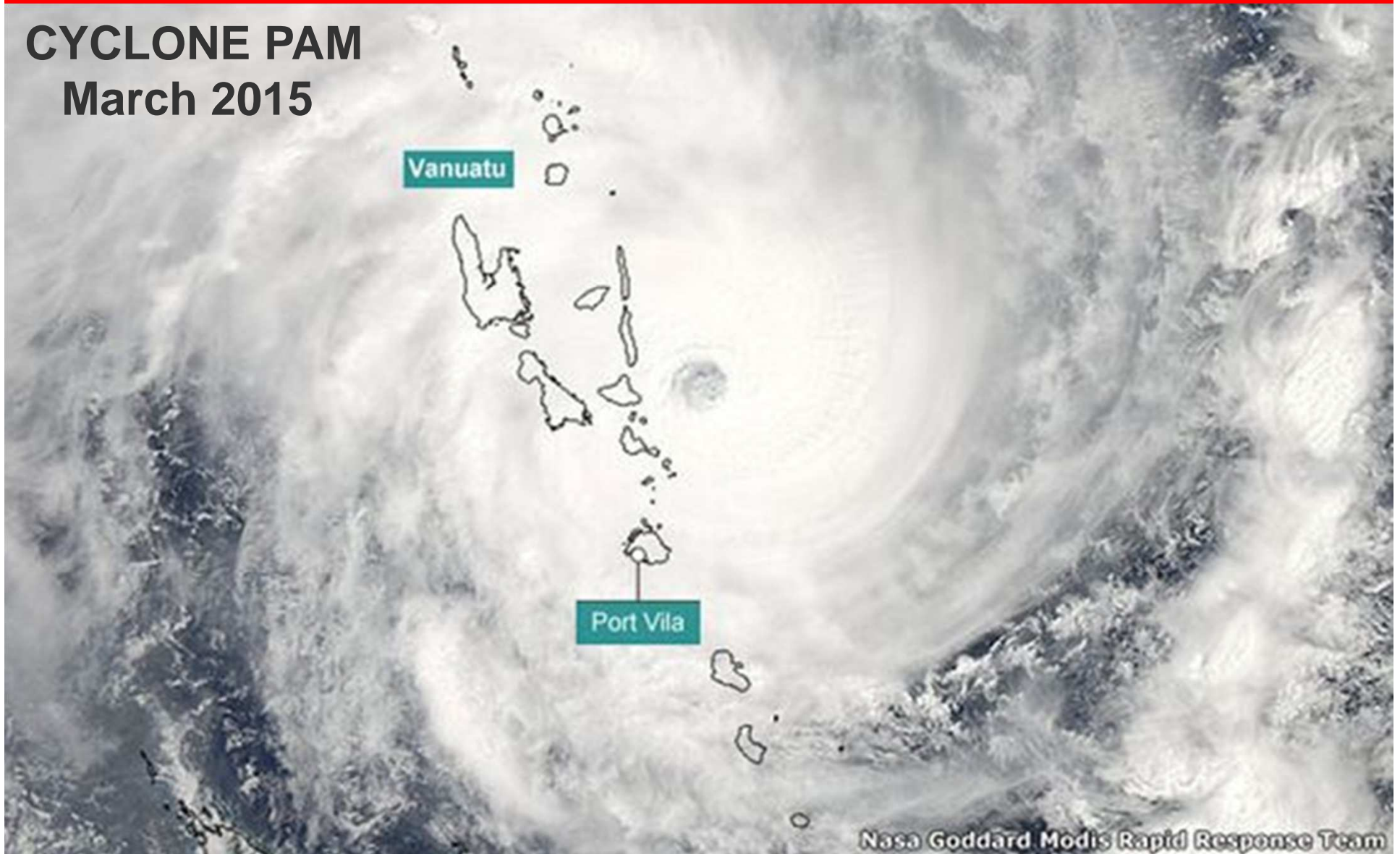
ETC / emergency.lu deployed
(in total 3) Rapid Deployment kits

- to the city of Tacloban, Ormoc, Guiuan, and Estancia
- for services to be provided to more than 5000 registered users



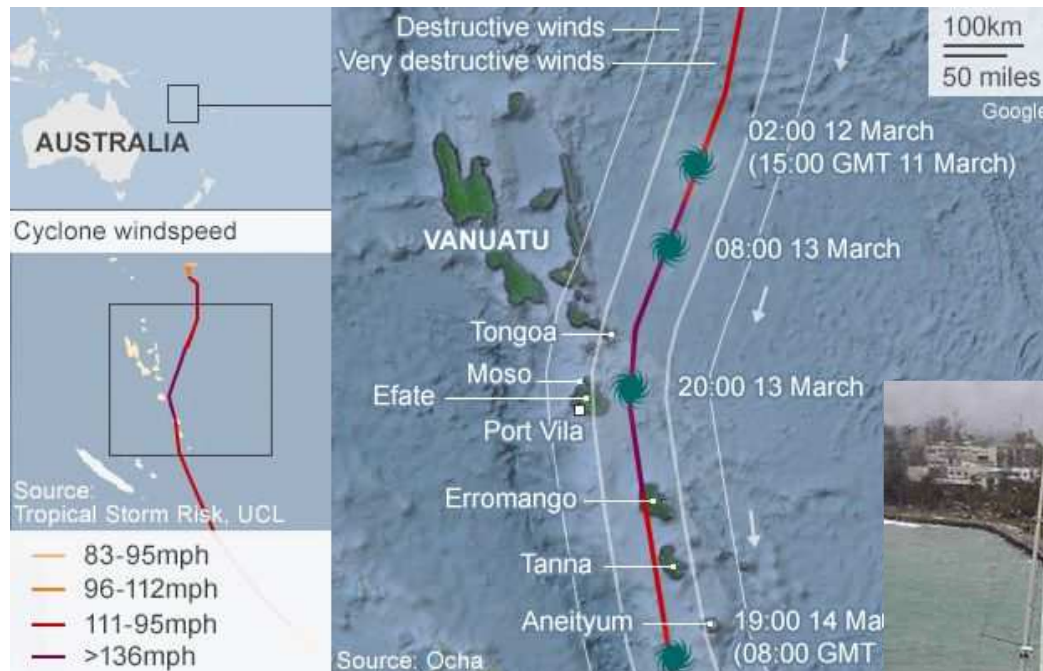
VANUATU 2015 - DISASTER RECOVERY CASE STUDY

CYCLONE PAM
March 2015



Nasa Goddard Modis Rapid Response Team

SEVERE TROPICAL CYCLONE PAM OF 2015



... is regarded as one of the worst disasters in the history of Vanuatu. A total of about 20 people lost their lives as a result of Pam with many others injured.



Photo: Reuters

... had the highest 10-minute sustained wind speed of any South Pacific tropical cyclone and caused major devastation.

DEVASTATION LEFT BY CYCLONE PAM



- Beside the death toll, according to UNICEF, at least 132,000 people have been impacted in Vanuatu by Tropical Cyclone Pam, of whom 54,000 are children.
- Communication across the country was crippled, with only one cellular tower in Port Vila remaining operational. The power grid was devastated
- Four days after the storm, nearly 60 of the nation's inhabited islands remained cut-off from the outside world.
- UNICEF has estimated that up to 90 percent of the buildings in Vanuatu have been affected by Tropical Cyclone Pam. Hospitals, schools and water supply are either compromised or destroyed.

Vanuatu President Baldwin Lonsdale said “After all the development we have done for the last couple of years and this big cyclone came and just destroyed... all the infrastructure the government has... built. Completely destroyed.”

From Wikipedia, the free encyclopedia

TANNA DEPLOYMENT - VANUATU 2015

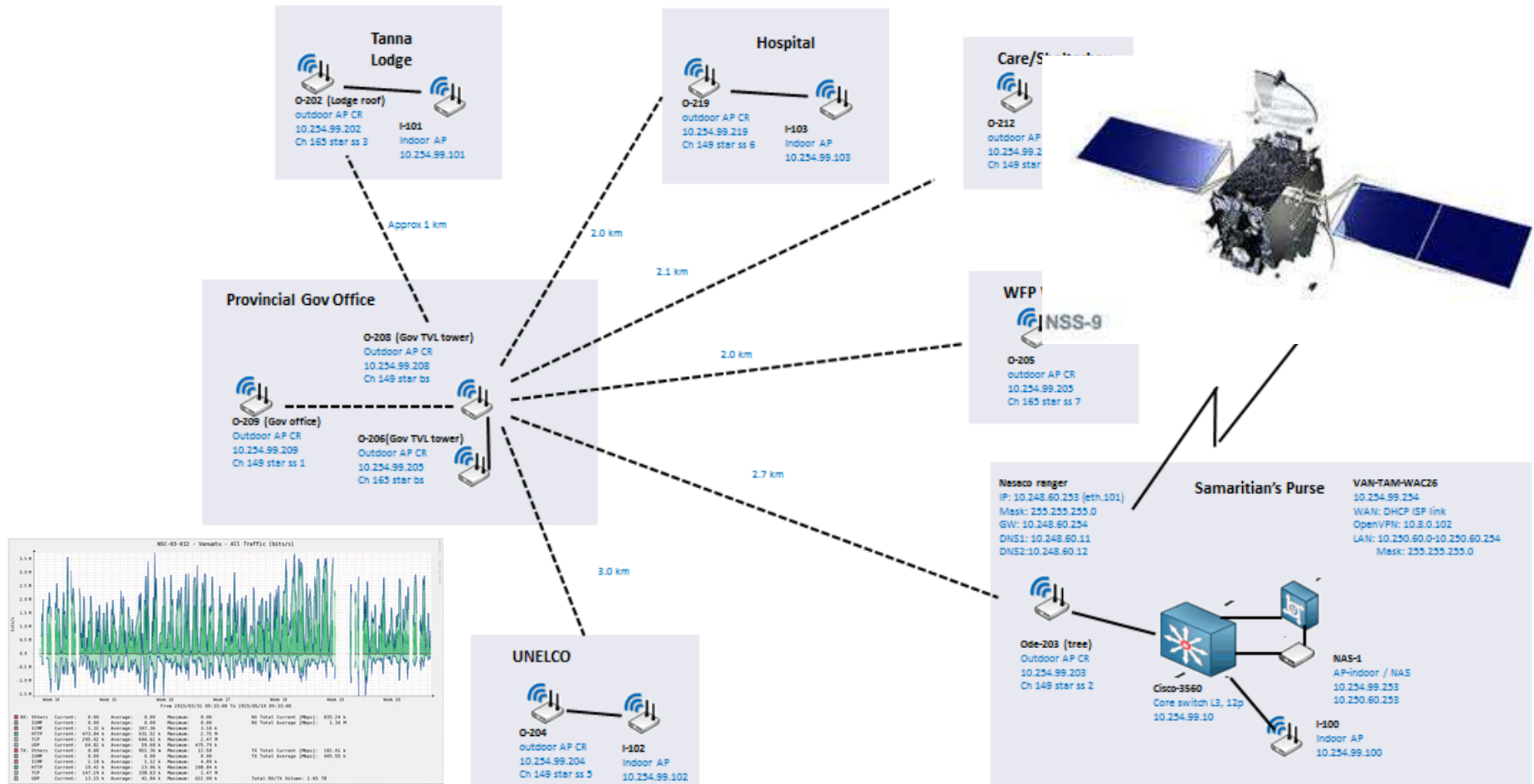
- Logistic & power has been seen by the engineers on site as the biggest issues.
- Few helicopters to carry the equipment from Bauerfield airport to the deployed islands. The equipment finally be transported by boat.



- As the power was not constantly available, we deployed a hard Ranger antenna system rather than the inflatable GATRs that initially have been kept installed.

MULTIPLE END-USERS BENEFITING FROM THE SATELLITE CONNECTIVITY

- Communication services to humanitarian aid, government & affected population





Thank you!

Alexander Jeuck
GM Governments & Institutions Asia Pacific

SES[▲]

your satellite company

501, Orchard Road • #18-00 Wheelock Place • Singapore 238880
Office +65 65933 607 Mobile +65 9736 9037

alexander.jeuck@ses.com • www.ses.com